

The Updates For Water Consumption Regulation and the new enforcement dates.



وزارة التجارة
Ministry of Commerce



وزارة الصناعة والثروة المعدنية
Ministry of Industry and Mineral Resources



وزارة البيئة والمياه والزراعة
Ministry of Environment Water & Agriculture
المملكة العربية السعودية - Kingdom of Saudi Arabia



الهيئة السعودية للمواصفات والمقاييس والجودة
Saudi Standards, Metrology and Quality Org.



الجمارك السعودية
SAUDI CUSTOMS

هيئة المحتوى المحلي
والمشتريات الحكومية
Local Content & Government
Procurement Authority



المياه الوطنية

المواصفات السعودية
Saudi Standards



Contents

- 01 The Scope
- 02 The Updates For The Regulation.
- 03 Mechanism for putting the water consumption rationalization label.
- 04 Timelines of enforcement
- 05 Q & A and Discussion



The Scope

المواصفات السعودية
Saudi Standards



The scope of the water consumption tools



**Mixers For
(Public /Private
/ Kitchen)**



Shower Heads

Taps



**Hand
spray/spray
mixer**



The scope of the water consumption tools



S&P trap

Toilets Flush System (Single / Dual)



Urinal Flush System



The scope of the water consumption tools



Flushing Water Tanks
(New)



Regulators (New)

The scope of the water consumption tools (Updated)

Lab taps



Water filter tap



Bidet Mixer



Eastern toilet



Travel Flusher



Shower Mixer



Public Tap



Garden Flusher



Samples of some products that out of scope

The Updates For The Regulator.

المواصفات السعودية
Saudi Standards



Requirements for Regulation (Updated)

Product Type	Nominal Flow Rate, Q_{nom} (l/min)*		Water Efficiency Rating
Faucets / Bathroom basin, mixers (public)	$1.9 \geq Q_{nom} > 1.7$		B
	$1.7 \geq Q_{nom}$		A
Faucets /Bathroom (private) / Kitchen	$5.7 \geq Q_{nom} > 4.5$		B
	$4.5 \geq Q_{nom} \geq 3.0$		A
Faucets/ Shower taps	$9.5 \geq Q_{nom} > 7.6$		B
	$7.6 \geq Q_{nom} \geq 1.9$		A
Hand spray / Spray mixers	$8.0 \geq Q_{nom} > 7$		B
	$7 \geq Q_{nom} \geq 5.7$		A
Water closet / toilet flush system Single/dual	(single flush)	$3.5 > Q_{nom} > 3$ (S trap)	B
		$4.5 > Q_{nom} > 3$ (P trap)	
	$3.0 \geq Q$ (S & P trap)		A
	(dual flush)	$3.5 > Q_{nom} > 3$ as calculated by $(f+(5 \times 1))/6$ (S trap)	B
$4.5 > Q_{nom} > 3$ calculated by $(f+5 \times 1))/6$ (P trap)			
full flush value shall not exceed 4.8 liters			
$3.0 \geq Q_{nom}$ (S& P trap)		A	
Eastern toilet flush boxes	$6 \geq Q_{nom} > 5$		B
	$5 \geq Q_{nom}$		A
Water flush regulators	$6 \geq Q_{nom} > 2.7$		B
	$2.7 \geq Q_{nom}$		A
Urinal flush system	1.0		B
	5.0 or waterless		A

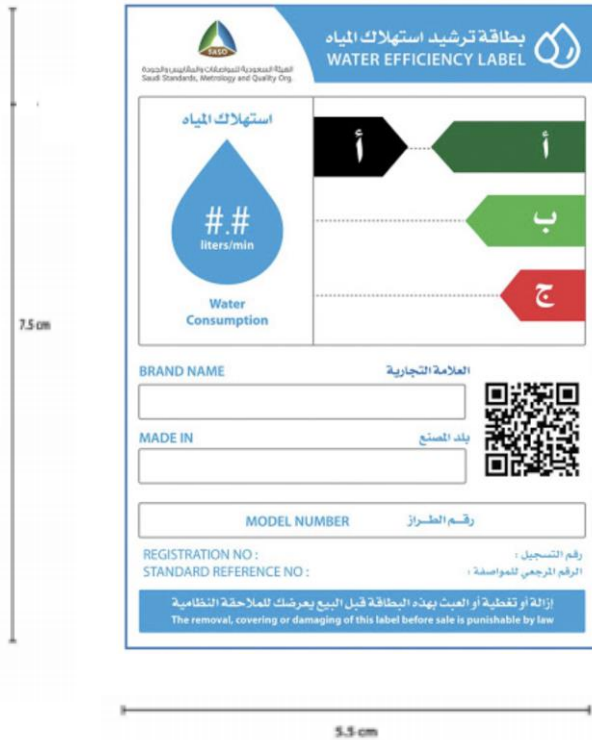
Product	Type	HS Code	Maximum Flow Rate	Minimum Flow Rate	
Faucet (Taps)	Mixers	Bathroom basin faucets	848180900002	1.9	-
		Bathroom / Kitchen basin	848180900002	5.7	3.0
		Shower taps and mixers	732490000001	9.5	1.9
		Hand spray / Spray mixers	848180900001	8.0	5.7
		Toilets with dual / single flush system	Single flush	S trap	691010000008
P trap	4.5			-	
Dual flush	S trap		691010000005	(Dual flush) Max of the average is 3.5 as calculated by $(f+(5 \times 1))/6$ (S trap) Max. of the average is 4.5 as calculated by $(f+5 \times 1))/6$ (P trap) full flush value shall not exceed 4.8 liters	-
	P trap				-
Eastern toilet flush boxes		392290000002	6.0	-	
Water flush regulators		848190000001	6.0	-	
Urinal flush system		691010000007	1.0	-	

Mechanism for putting the water consumption rationalization label.

المواصفات السعودية
Saudi Standards



Marking Information



Marking Information

Brand Name - العلامة التجارية
HHH

Model Name - اسم الموديل
CR00454021

Folw Rate - معدل تدفق المياه
4.7

Product Name - اسم المنتج
Kitchen Mixer

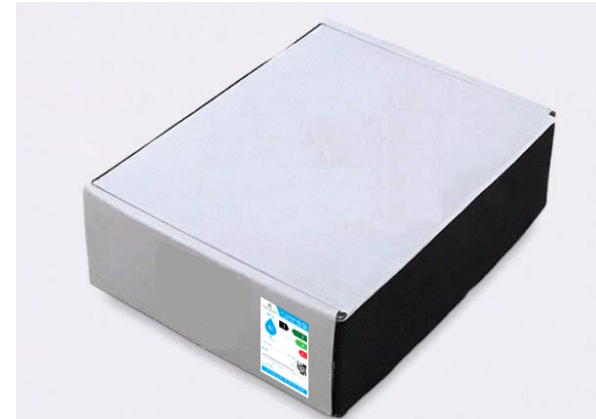
صنع في إيطاليا
MADE IN ITALY

Affixing of Water Efficiency Label on the Product Packs **Correctly**

Affixing Label on External Pack



Affixing Label on Product Pack



Affixing of Water Efficiency Label on the Product Packs **Incorrectly**

**Affixing the Label on
Upper/Bottom face of outer
carton**



**Affixing the label inside
the product package /
outer carton**



**Affixing the Label on the face of
the Products package which is not
visible to client**



**Affixing the Label in
Black and White**

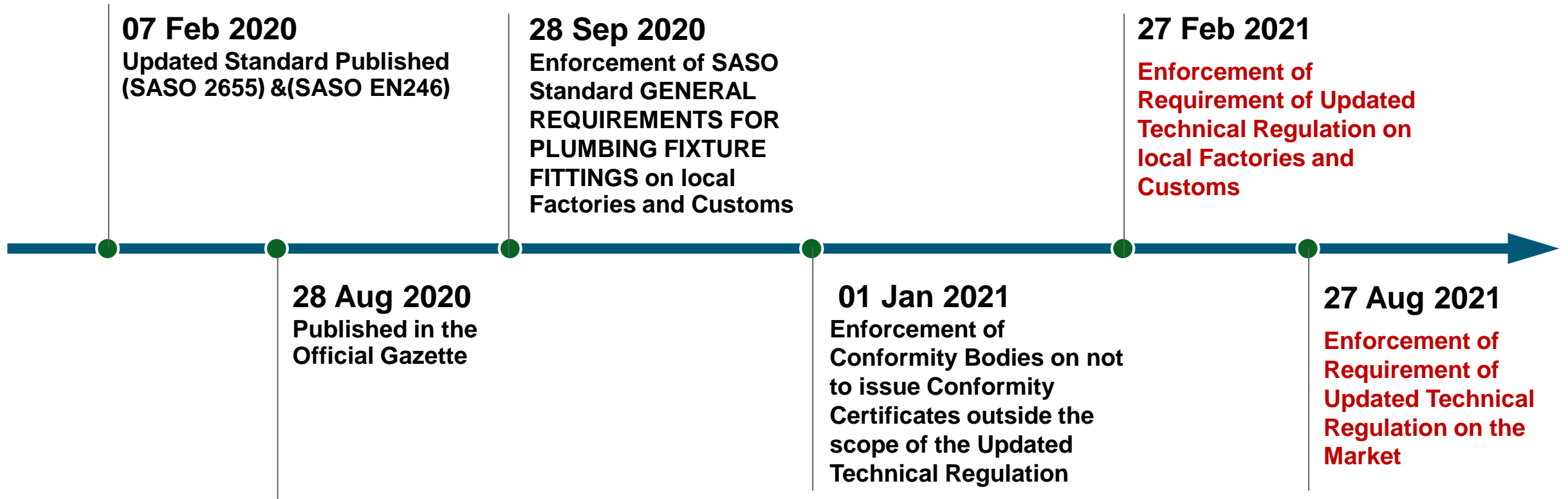


Timeline of Enforcement

المواصفات السعودية
Saudi Standards



Timeline of Enforcement



Q & A and Discussion

920009085



www.saso.gov.sa



info@saso.gov.sa



@SASOGOV



وزارة التجارة
Ministry of Commerce



وزارة الصناعة والثروة المعدنية
Ministry of Industry and Mineral Resources



وزارة البيئة والمياه والزراعة
Ministry of Environment Water & Agriculture
Kingdom of Saudi Arabia المملكة العربية السعودية



الهيئة السعودية للمواصفات والمقاييس والجودة
Saudi Standards, Metrology and Quality Org.



الجمارك السعودية
SAUDI CUSTOMS

هيئة المحتوى المحلي
والمشتريات الحكومية
Local Content & Government
Procurement Authority

